

Target:

- to spot new methodologies for the restoration of the materials
- creation of workbooks for the good knowledge of the restoration

PURPOSE OF THE ANALYSIS

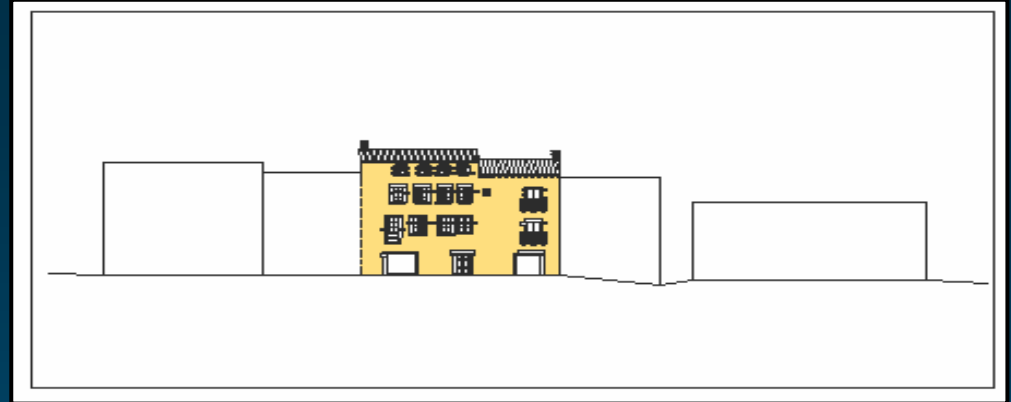
THROUGH THE SEPARATION OF THE STRUCTURE IS POSSIBLE TO IDENTIFY THE CHARACTERISTICS THAT ALLOW THE DETAILED KNOWLEDGE OF THE MATERIAL INTENDED FOR THE WORK OF PRESERVATION

MATERIALS AND PROCESSING

BUILDING TECHNIQUES AND INSTALLATION

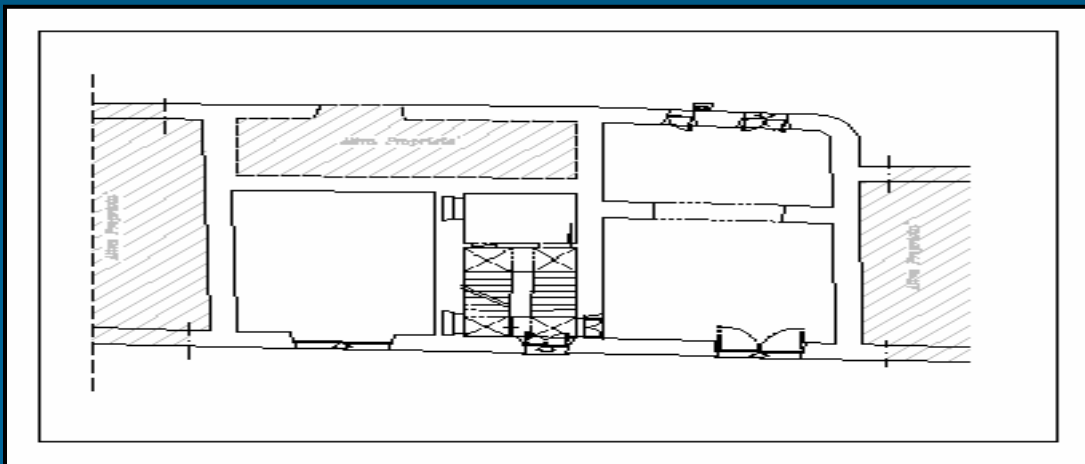
SIGNS OF BUILDING AND HISTORICAL STRATIFICATION

CONTEXT



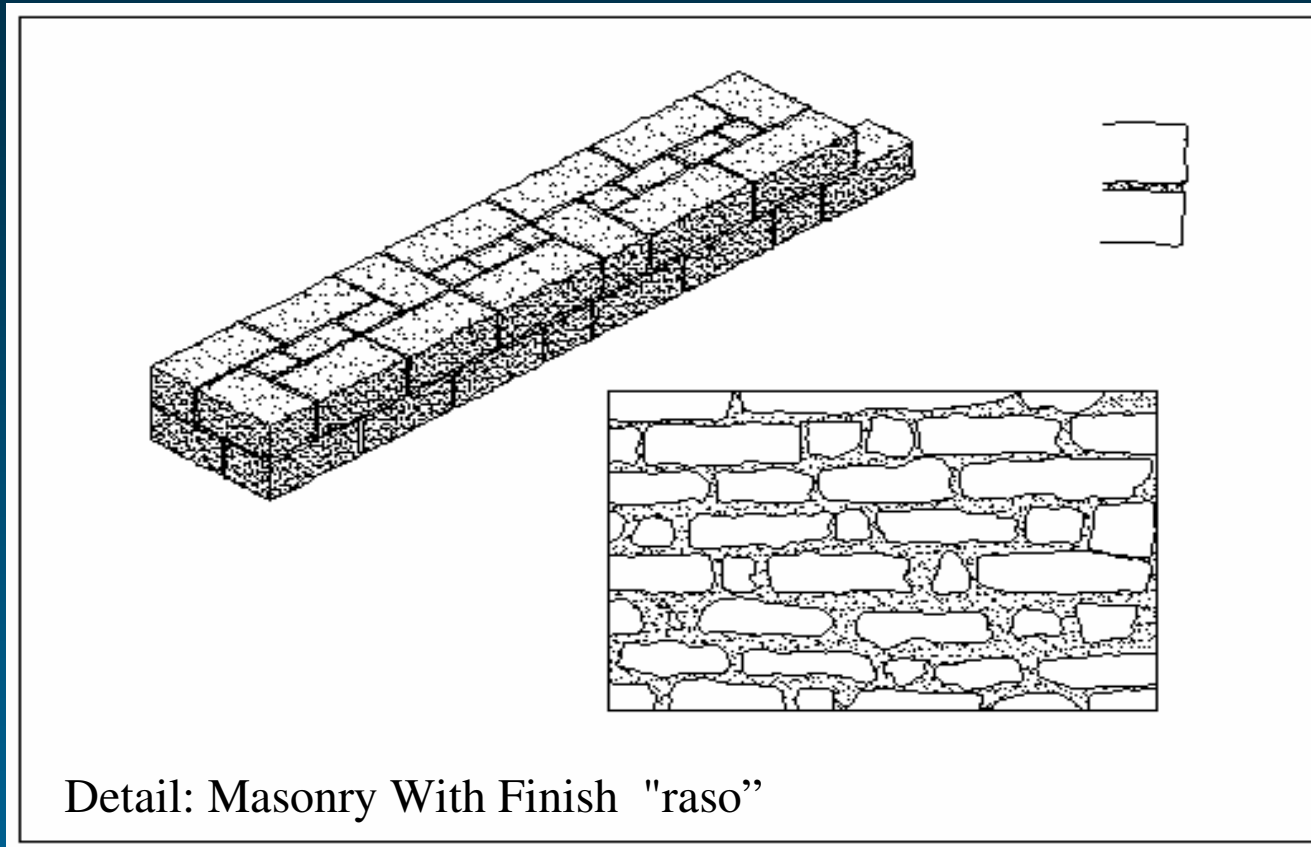
- GEOGRAPHICAL , MORPHOLOGICAL AND PHYSICAL ASPECTS
- CLIMATE
- PRESENCE OF WATER SOURCE , SPRING , STREAM, TANK, STORAGE TANK
- FORM AND LOCATION OF THE GROUND
- LOCATION USE OF THE EXTERNAL SPACES AND ACCESSIBILITY
- RELATIONSHIPS BETWEEN BUILDING AND GROUND
- ORIENTATION, EXPOSURE, VIEWS OF THE BUILDING

ARCHITECTURAL ANALYSIS



- PLANT
- VOLUMETRICAL CONFIGURATION
- BUILDING ORGANIZATION
- GOAL OF USE
- DEGREE OF USE

Structural and building characters

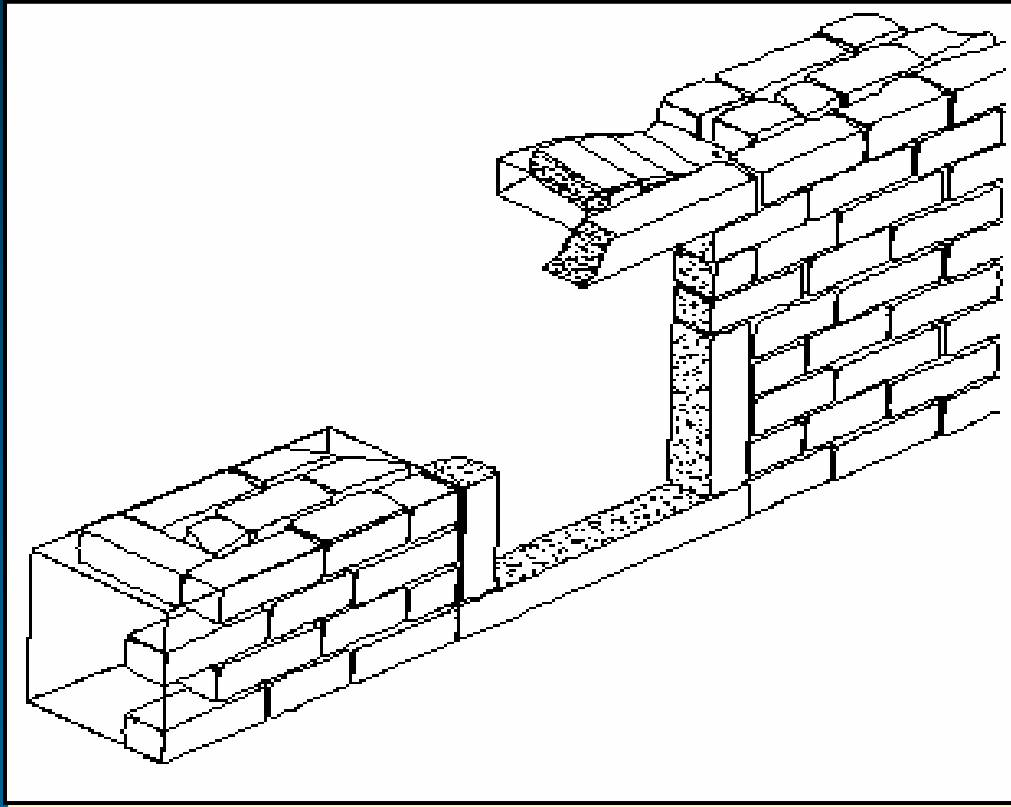


Detail: Masonry With Finish "raso"

*"Masonry.... using prismatic cantons,
are easily to cut with cones and it is possible to
regularized them with the chisel so one is able
to tidy up the one on the others..... "*

" Geographical commercial statistic historical Dictionary of S.M. the King of Sardinia",
Ed. Cassone Marzobati Vercellotti Marzobati Vercellotti Typographers, Turin 1833

Detail : Holing



" In the construction usually are employed the simple clay, the lime for the indoor and outdoor plaster, this one is very expansive, because the calcareous rocks and the furnaces are distant, and the transport is possible only on the back of a pack- animal".

**" Geographical commercial statistic historical Dictionary of S.M. the King of Sardinia",
Ed. Cassone Marzobati Vercellotti Marzobati Vercellotti Typographers, Turin 1833**

ANALYSIS OF THE DECAY (Normal 1/88)

To spot the elements of alteration and decay of some materials

Forms of the decay

Intensity and diffusion

causes

Effects and their evolution

ANALYSIS OF THE WORK

TO SPOT NEW METHODOLOGIES OF RESTORATION

WORKBOOK FOR THE GOOD RESTORATION

REALIZATION WEB PAGE

CAUSES AND PHENOMENONS OF THE ALTERATION AND DECAY OF THE MATERIALS

- **CHEMICAL AND PHYSICAL CHARACTERISTICS OF THE MATERIAL WHERE THE CAUSE OPERATES (ANALYSIS AND LABORATORY)**
- **TYPE OF WORK AND INSTALLATION OF THE MATERIAL WHERE THE CAUSE OPERATES**
- **ENVIRONMENTAL CONTEXT**
- **DECAY AGENTS AND MECHANISMS ACTIVATED**
- **THESE SPECIFICATIONS ALLOW THE POSSIBILITY TO IDENTIFY IF THE CAUSE IS:**
 - 1. Current or previous**
 - 2. Continuous or isolated**
 - 3. Ordinary or extraordinary**

ANALYSIS OF THE DECAY

- **TYPES OF DECAY (NORMAL 1/88)**
- **PICTURE**
- **DESCRIPTION (NORMAL 1/88)**
- **INTENSITY**
- **CAUSES**
 1. **Direct**
 2. **Indirect**
- **EFFECTS**
- **EVOLUTION OF THE PHENOMENON**